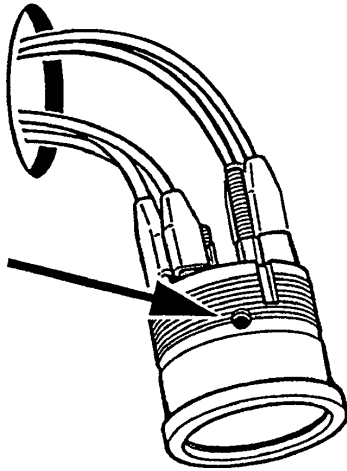


Note: Calibration is mandatory for gauge to work properly. Tank must be empty when calibration is performed.

Using a small plastic screwdriver, turn the adjustment screw located in a hole on the side of the gauge housing. NOTE: Do not use a metal screwdriver... static discharge can damage the gauge.



Move the pointer until it comes to rest directly on "O" or "E" (whichever designates empty on your gauge).

When you have moved the pointer to "O" or "E" with the tank empty, calibration is complete and your gauge is ready to use.



Diagram E

Calibrating gauge with the sender is necessary for accurate operation

### VDO Limited Warranty

VDO North America warrants all merchandise against defects in factory workmanship and materials for a period of 24 months after purchase. This warranty applies to the first retail purchaser and covers only those products exposed to normal use or service. Provisions of this warranty shall not apply to a VDO product used for a purpose for which it is not designed, or which has been altered in any way that would be detrimental to the performance or life of the product, or misapplication, misuse, negligence or accident. On any part or product found to be defective after examination by VDO North America, VDO North America will only repair or replace the merchandise through the original selling dealer or on a direct basis. VDO North America assumes no responsibility for diagnosis, removal and/or installation labor, loss of vehicle use, loss of time, inconvenience or any other consequential expenses. The warranties herein are in lieu of any other expressed or implied warranties, including any implied warranty of merchantability or fitness, and any other obligation on the part of VDO North America, or selling dealer.

(NOTE: This is a "Limited Warranty" as defined by the Magnuson-Moss Warranty Act of 1975.)

VDO North America • 188 Brooke Rd. • P.O. Box 2897 • Winchester, VA 22603 • Phone: 540-665-2428

If in doubt, please contact your dealer or VDO Instruments at (540) 665-2428.

**CAUTION:** Read these instructions thoroughly before making installation. Do not deviate from assembly or wiring instructions. Always disconnect battery ground before making any electrical connections.

### Sender Installation:

Mount the sender vertically in the deepest part of the tank, as shown in Diagram D. You will need to cut a 2 3/4" hole.

### Wiring the Fuel Gauge:

1. Run wires from the adjustable fuel gauge location to:

- a) +12 volt power terminal

### CAUTION!!!

This adjustable fuel gauge **must be calibrated** before it can work properly. **Please read and follow all instructions before installing this gauge.**

### Tools and Materials Needed For Installation:

- 16 Gauge stranded, insulated wire
- Non-insulated 1/4" spade connectors
- 2 1/16" hole saw
- Drill and drill bit set
- Half-round file
- Tape measure or ruler
- Small tools: wrench or nut driver, utility knife, pliers, etc.

(This positive power source **MUST BE SWITCHED**, and should be protected with a fuse)

- b) the light switch (also after the fuse in the fuse box)
- c) a good ground location
- d) the tube-type fuel sender.

2. Wire the adjustable fuel gauge and tube-type sender as shown in Diagram C.

3. After wiring gauge/sender, calibrate them (Diagram E). With the tank empty, use the calibration screw to move the pointer to "E." When the pointer rests on "E" with the tank empty, the gauge and sender are calibrated and ready for use, and the gauge can be mounted.

[text continues] →

### Parts List

Item	Description	Quantity
1.	Adjustable Fuel Gauge and/or	1
1.	Tube-Type Fuel Sender	1
2.	Lamp Socket (Push in, wedge-type)	1
3.	Light Bulb (12-volt / G.E. #158 or equivalent)	1
4.	VDO Spin-Lok™ Clamp or Mounting Bracket	1
5.	Installation Instructions	1

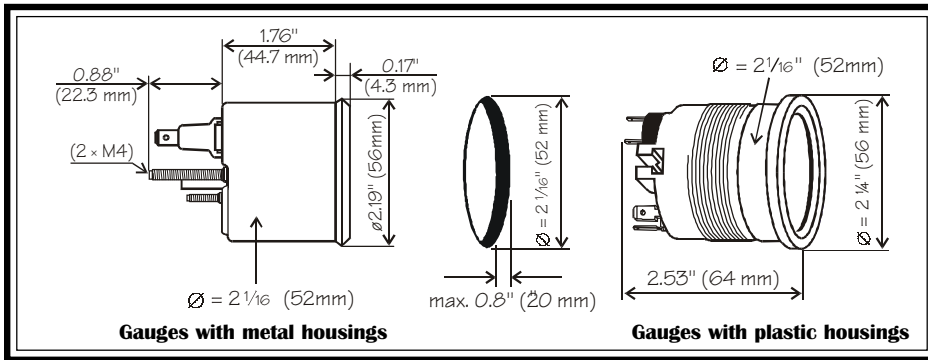
**VDO® North America**

## Adjustable Fuel Gauge Tube-Type Fuel Sender

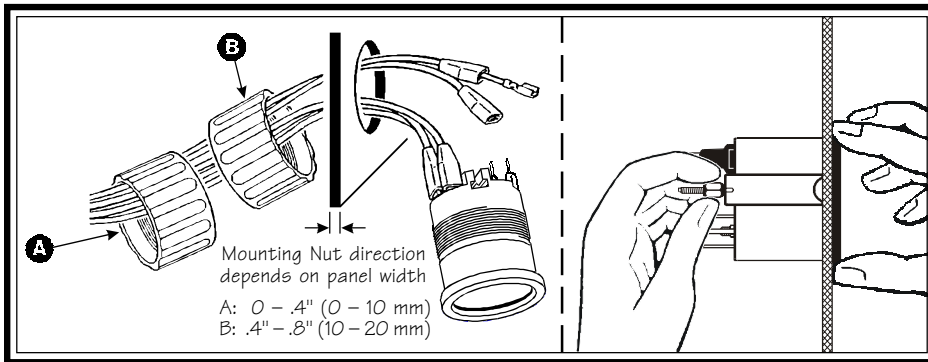
### Installation Instructions

Instruction Sheet # 0 531 060 140  
Rev. 02-01

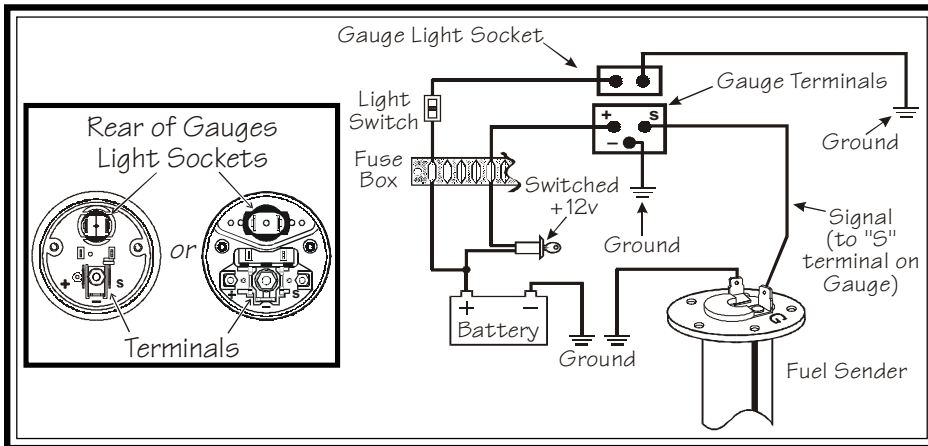
INSTRUCTIONS FOR THE INSTALLATION OF THE ADJUSTABLE FUEL GAUGE AND/OR TUBE-TYPE SENDER ARE CONTAINED HEREIN. USE IS RESTRICTED TO 12-VOLT NEGATIVE GROUND ELECTRICAL SYSTEMS. LIGHT BULB, IF SUPPLIED, IS 12 VOLT.



**Diagram A**  
Gauge dimensions



**Diagram B**  
Proper mounting with VDO's Spin-Lok<sup>®</sup> Clamp or mounting bracket



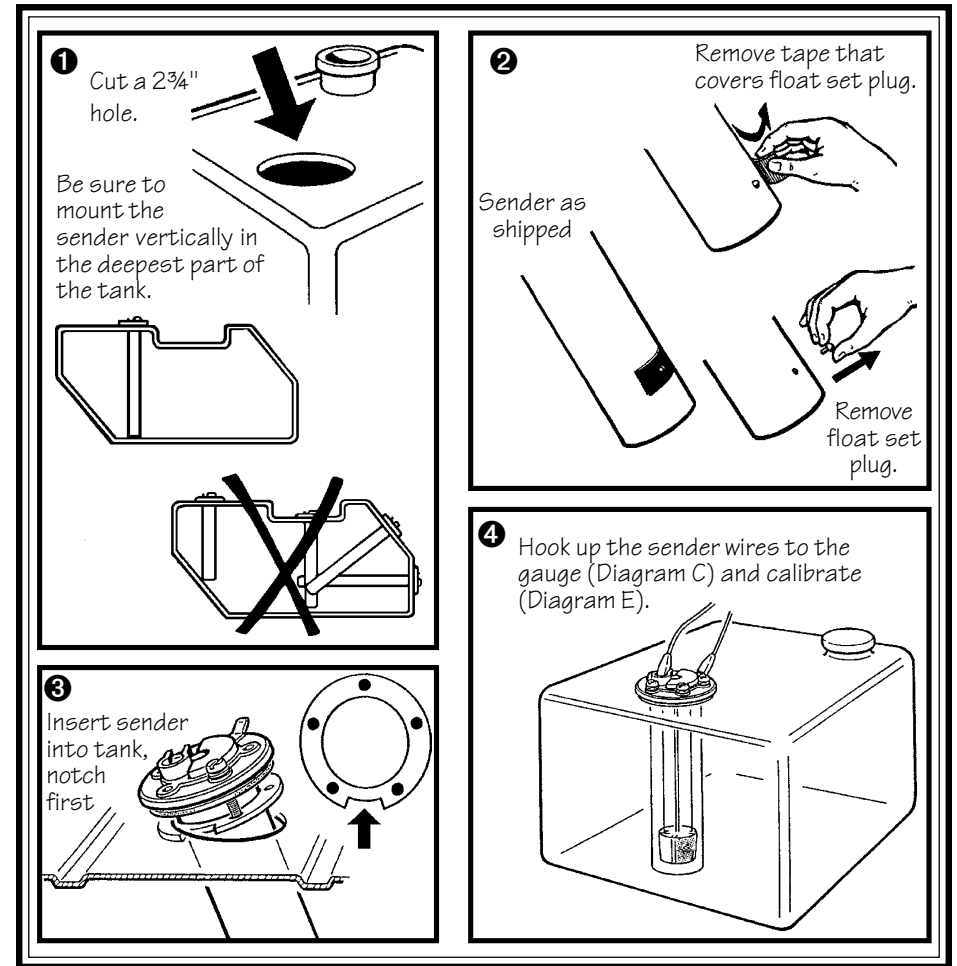
**Diagram C**  
Adjustable Fuel Gauge Wiring to Tube-type Sender

**Fuel Gauge Installation:**

1. Select the location where you will mount the gauge, and mark a center point.
2. Cut a 2 1/16" (52 mm) hole. Be sure to cut the hole exactly. If the gauge is too snug, use a file to slightly enlarge the opening. (Diagram A)
3. Secure the gauge in place either with the U-shaped mounting bracket or the VDO Spin-Lok™ Mounting Clamp (whichever

came with your gauge). The VDO Spin-Lok™ Mounting Clamp direction depends on the thickness of the panel (Diagram B). Tighten the clamp until the fuel gauge can no longer be rotated by hand. **DO NOT OVERTIGHTEN.**

At this point, the installation, wiring and calibration of your new VDO Gauge and/or Sender is complete. Turn on the ignition and lights and check to see that the instrument and light work properly. If they don't, re-check your wiring and your calibration.



**Diagram D**  
Install the sender vertically in the deepest part of the tank